



Code 2963LR-G

Total Chlorine
25 Test Strips



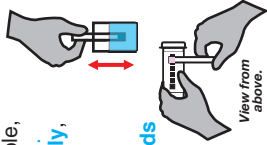
Insta-Test[®] ANALYTIC

Low Range TOTAL Chlorine ppm



Using a cup-size sample,
dip strip for **2 seconds**.

Remove strip vertically,
as shown. **DO NOT**
SHAKE OFF EXCESS
WATER. With pad still
vertical, wait **10 seconds**
and read the strip.
Discard strip after
30 seconds.



- Keep wet fingers out of the bottle.
- Cap bottle tightly after removing strip.
- Store in a cool, dry place.



LaMotte Company
802 Washington Ave., Chestertown, MD 21620 USA
410-778-3100 • www.lamotte.com



Drop holding box and dotted tolerance line