

**LaMotte** **Total Chlorine**  
 25 Test Strips

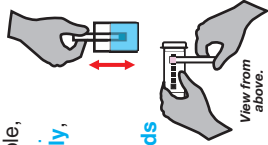
**Insta-Test**<sup>®</sup> ANALYTIC

**Low Range TOTAL Chlorine ppm**



Using a cup-size sample,  
 dip strip for **2 seconds**.

**Remove strip vertically**,  
 as shown. **DO NOT**  
**SHAKE OFF EXCESS**  
**WATER**. With pad still  
 vertical, wait **10 seconds**  
**and read** the strip.  
 Discard strip after  
 30 seconds.



- | Keep wet fingers out of the bottle.
- | Cap bottle tightly after removing strip.
- | Store in a cool, dry place.



LaMotte Company  
 802 Washington Ave., Chestertown, MD 21620 USA  
 410-778-3100 • [www.lamotte.com](http://www.lamotte.com)

