

INSTRUMENT RECORD CARD

model	order code
<input type="checkbox"/> Thermocouple K - blind	291-501
<input type="checkbox"/> Thermocouple K - LCD	292-501

serial no. _____

calibrated by _____ date _____

	0 °C	1000 °C	

This instrument has been checked or calibrated against reference instrument(s) calibrated by a UKAS Accredited Calibration Laboratory.

PLEASE NOTE: Due to regular software updates, please visit the download page on our website etiltd.com/downloads to ensure you have the latest version.



Thermocouple ThermaData® Loggers type K



Yalitech Instruments

Santiago de Chile, Río Refugio 9648, Parque de Negocios ENEA, Pudahuel.

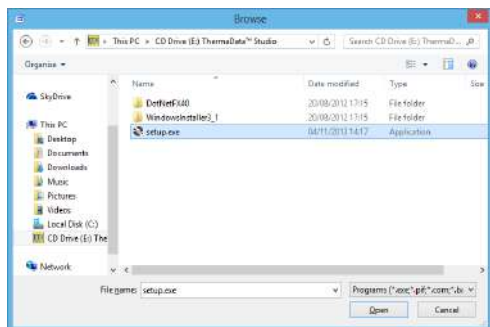
www.yalitech.cl · ventas@yalitech.cl · (+56 2) 28988221

Quick Start Guide

Remove old versions of ThermaData Studio software prior to installing new version (your data files will not be removed or lost)

PC SOFTWARE INSTALLATION

Place the CD in the CD drive. The CD will autorun. (If it does not, click 'Start', 'Run...' and browse to the CD drive and click 'Setup.exe')



or double click the 'My Computer' icon on the Desktop and double click the CD drive. ThermaData Studio PC Software requires Microsoft .Net Framework to be installed on the PC. Some PC's will already have this installed but if not, it will be installed from the CD. Click the 'Accept' button in the 'Microsoft License window'. (This may take a few minutes to install). When installed, the ThermaData Studio software installation will resume.

When the 'ThermaData Studio Software Setup Wizard' box appears, click the next button.

The program files will be installed by default to... 'C:\Program Files\ETI Ltd\ThermaData Studio\' (Recommended).

The 'Change...' button can be used to install to an alternate location (Advanced Users).

When the 'Custom Setup' box appears, click the 'Next' button (Thermocouple ThermaData Loggers do not require drivers).

The final installation dialogue box gives a last opportunity to go back and revise the installation settings. Click the 'Install' button to install the software. A moving bar will show the installation progress.

Click the 'Finish' button to exit the installation procedure.

The icon for the ThermaData Studio software will be placed on the desktop. A ThermaData Studio shortcut will be placed in 'Start menu' - 'Programs' - 'ETI Ltd'.

SETTING UP THE LOGGER

Connect the logger to the PC using the 'USB' lead

Select 'Logger Settings' from the drop-down 'Logger' menu

Enter a name for the logger in the Title (User ID) box

Select temperature settings for 'over' or 'under' alarm using the drop-down menu boxes

Select the data storage method – 'Stop when full' or 'Overwrite oldest data'

Select a 'Start Delay' (note: for immediate start enter 0 hours, 0 minutes)

Select the logging interval (note: the total time the log will last is shown below the drop-down box)

Click the 'Send Settings' button

Start the logger by clicking the 'Start button' on the PC screen or by pressing the button on the logger until the LEDs flash

READING THE LOGGER

Connect the logger to the PC using the 'USB' lead

Select 'New Document' from the drop-down 'Download' menu

'View' readings using data window or graph window

Current logger status can be viewed by pressing/clicking the status button (tab).

WARNING: IPA and other solvents may cause damage to the case and screen of this instrument.

ATTENTION: This logger is fitted with a SL-760 AA 3.6V Tadiran battery. Failure to use the same type of battery will result in an error with the logger.

Full operating instructions can be found on the ThermaData Studio Software.