

# ColorQ UCL

Order Code 2063

**For software Version 2.00 or higher**

To ensure proper testing results:

- Insert tubes into ColorQ with line and arrow facing forward.
- **"Sun"** = Shade meter from bright sunlight. Press/Hold button to turn off.
- **"Er7"** = Tube is misaligned or scratched, or light chamber is stained. See Users Guide for more instructions.
- Brush and rinse all tubes promptly after use.
- Allow tubes to dry before returning to case.
- Replace reagent caps securely.
- If the unit should auto-off during testing rinse and fill one tube to Blank and return to testing.
- Use only LaMotte replacement reagents.
- bAt = Battery is low.



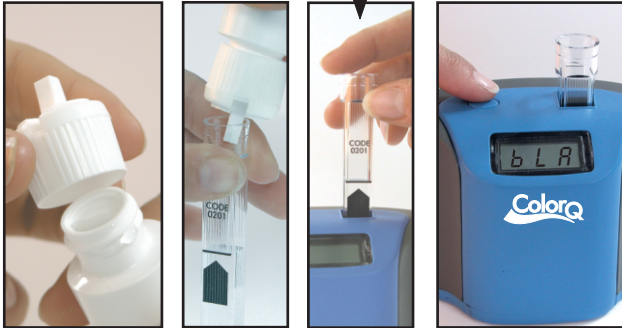
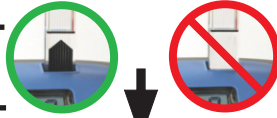
WARNING! This set contains chemicals that may be harmful if misused. Read cautions on individual containers carefully. Not to be used by children except under adult supervision.

NOTE: Wash and rinse tubes immediately after use. Tubes used for the ultra high range test may become stained. Stain will not wash out. Stain may fade if stained tubes and caps are placed in direct natural light or sunlight. Designate tubes for use with the ultra high range test. Tubes can be marked with a permanent marker. Blank and test must be done in the same tube to eliminate error caused by stained tubes. Replace heavily stained tubes.

INTERFERENCES: bromine, chlorine dioxide, iodine, oxidized manganese and chromium, and ozone.

## BLANK (CALIBRATION)

**1** bLA



1. Fill sample bottle (**0689**) with water sample. Replace cap.
2. Fill clean tube to the 5mL line with water sample.
3. Insert tube into ColorQ as shown.
4. Press button to turn meter on. When "bLA" appears press button to "Blank" the meter, and go to "FCL" Free Chlorine. To go to "UCL" Ultra High Range Total Chlorine press button FOUR times. Remove tube.

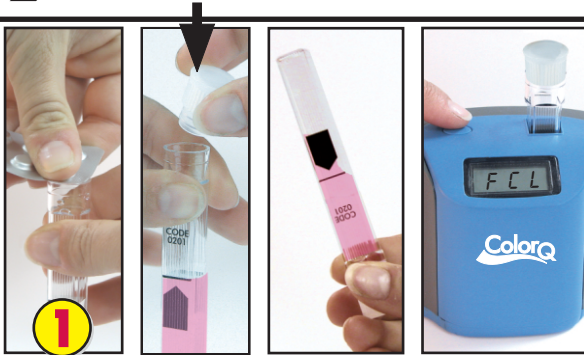
\* Reagent is a potential health hazard. Read SDS at [www.lamotte.com](http://www.lamotte.com).

## FREE CHLORINE

ColorQ Range: 0-10 ppm Chlorine

# 2 FCL

DPD 1 - Code 6903A-H



1. Add 1 **DPD 1** Tablet to same tube.
2. Cap. Shake for TWENTY seconds. Invert slowly 5 times. Tap tube on flat surface 3 times to remove air bubbles. Insert tube into ColorQ.
3. Press button to read "FCL" Free Chlorine.
4. Press button to go to "tCL" Total Chlorine. Remove tube.  
Or press button past "tCL" (Total Chlorine) and "UCL" (Ultra High Range Chlorine) to return to bLA (blank) or hold button until OFF is displayed. Remove tube.

## TOTAL CHLORINE

ColorQ Range: 0-10 ppm Chlorine

# 3 tCL

DPD 3 - Code 6197A-J



1. Remove cap from reacted FCL tube.
2. Add 1 **DPD 3** Tablet to the same tube. Cap. Shake for TWENTY seconds. Invert slowly 5 times. Tap tube on flat surface 3 times to remove air bubbles.
3. Insert tube into ColorQ.
4. Press button to read "tCL" Total Chlorine.
5. Press button past "UCL" (Ultra High Range Chlorine) to return to bLA (blank) or hold button until OFF is displayed. Remove tube.

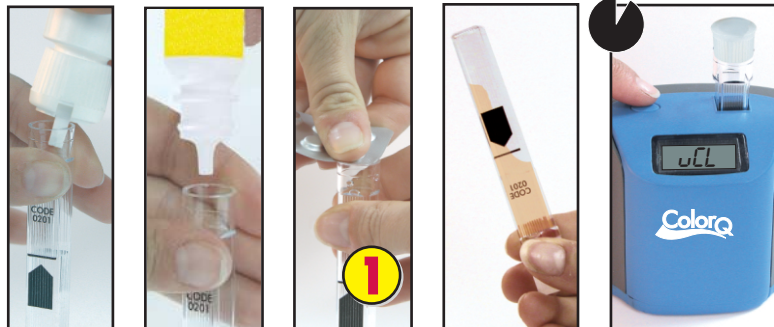
\* Reagent is a potential health hazard. Read SDS at [www.lamotte.com](http://www.lamotte.com).

## ULTRA HIGH RANGE TOTAL CHLORINE

ColorQ Range: 0 -750 ppm

# 4 uCL

\*Chlorine Reagent #2 - Code 4499WT-H  
DPD 3 - Code 6197A-J



1. Fill sample bottle (**0689**) with water sample. Replace cap.
2. Fill tube to the 5 mL line with water sample.
3. Insert tube into ColorQ with arrow facing forward.
4. Press button to turn meter on. When "bLA" appears press button to "Blank" the meter, press button FOUR times to go to "uCL" Ultra High Range Total Chlorine. Remove tube.
5. Add 5 drops **Chlorine #2** to same tube.
6. Add 1 **DPD 3** Tablet. Cap. Shake for TWENTY seconds. Invert slowly 5 times.
7. Allow tube to sit for TWO minutes. Tap tube on surface 3 times to remove air bubbles.
8. Invert 1 time to mix. Insert tube into ColorQ.
9. Press button to read "uCL" Ultra High Range Total Chlorine.
10. Press button to return to blank meter or hold button until OFF is displayed. Remove tube.

\* Reagent is a potential health hazard. Read SDS at [www.lamotte.com](http://www.lamotte.com).